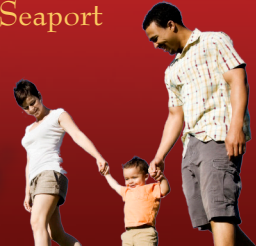




Mystic Mobility Study

March 2011



Summary of Findings for the Mystic Mobility Study

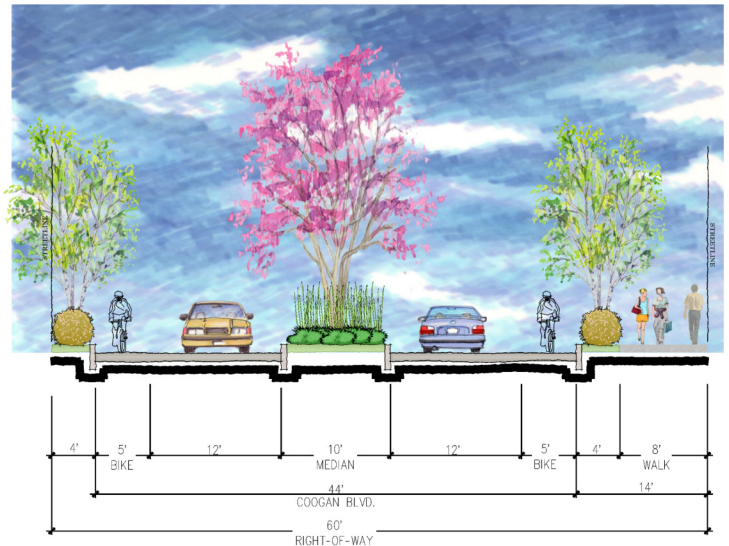
A number of exciting transportation improvements have been developed through the 18-month long Mystic Mobility Study, which has benefited from significant stakeholder and public input. Surveys, workshops, advisory committee meetings, data analysis and in-depth site investigations have resulted in the development of a comprehensive set of plans and docu-

ments aimed at improving transportation in the Mystic area. This newsletter highlights the results of these efforts. In the long run, these plans could lead to a more sustainable, livable transportation system and better quality of life for Mystic area residents and its thousands of visitors. The primary improvements proposed are depicted in the following areas:

Pedestrian, Streetscape, and Bicycle Facilities

The study developed concept plans that detail potential streetscape and roadway improvements. The streetscape improvements are similar to those used in the streetscape project completed in the Downtown area of Mystic, such as granite and wood benches, ornamental landscaping, decorative stamped concrete, and pedestrian/vehicular wayfinding signage. Pedestrian-scale wayfinding signs help to minimize the perceived distance and improve the overall pedestrian experience. Vehicular signage can minimize unnecessary congestion that results when routes to popular destinations are not clearly marked. Specific areas for these improvements include:

- Bicycle lane pavement markings on Route 27 from Coogan Boulevard to Route 1
- Improved pedestrian facilities and overall streetscape improvements on Coogan Boulevard
- Suggested bicycle lanes on Coogan Boulevard
- Enhanced streetscape at major intersection corners throughout Mystic



Intersection and Roadway Improvements

Intersection and roadway improvement concepts were developed for several key locations in the project area to help reduce congestion and improve traffic flow and turning movements with minimal property impacts. These concept design plans were developed for the following intersections:

- Roadway widening at the intersection of U.S. Route 1 and Route 27 (Denison Avenue). This allows an additional left turn lane on Route 27, as well as left and right turn lanes on Route 1
- New signal timing to improve traffic flow at the intersection of Route 27 (Greenmanville Avenue) and Coogan Boulevard
- Roadway widening on Route 27 south of its intersection with Coogan Boulevard to allow for a northbound left turn lane.

Mystic Mobility Study • Newsletter

continued from front page

Trolley Shuttle and Water Taxi Service

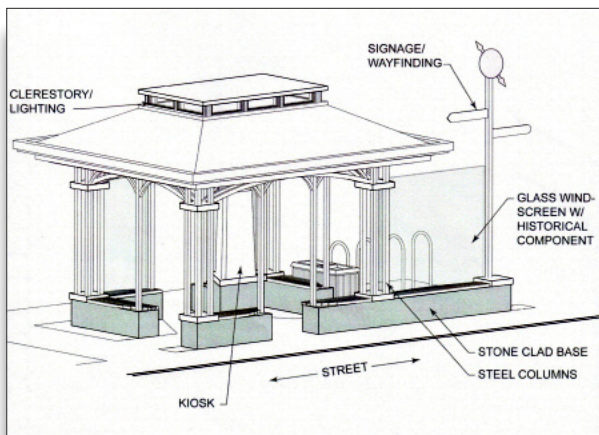
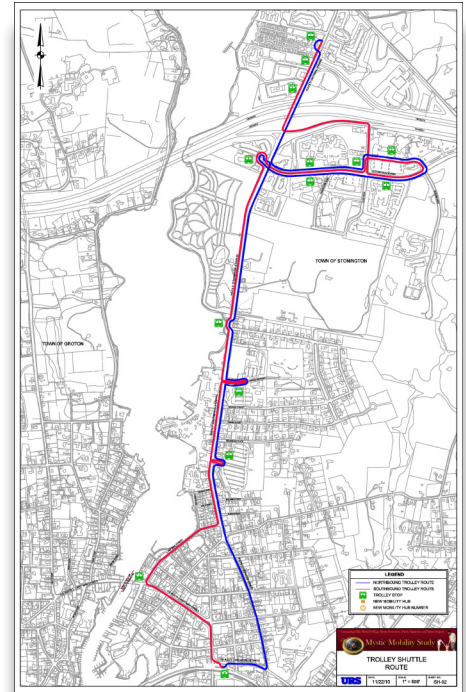
Previous trolley shuttle operations were reviewed to inform the study of the best ways to implement an effective trolley shuttle program for Mystic. Other trolley systems operating in areas similar to Mystic were studied and best practices were identified to help guide development of the Mystic Trolley shuttle.

Lessons learned demonstrated that a trolley shuttle should be fare-free, operate frequently, and be well publicized through a comprehensive marketing program. A Mystic Trolley shuttle circulator route was developed that would connect the Mystic area's main attractions, including hotels to the north, Mystic Aquarium, Olde Mistick Village, Mystic Seaport Museum, Downtown Mystic and the Mystic Rail Station. Options for potential extension of the existing water taxi service were also explored.

New Mobility Hubs

The study introduced the concept of mobility hubs as a means of tying together all of the various modes and transportation into a seamless transportation network. Proposed mobility hubs would be strategically located at key intersecting points throughout the Mystic Study area's transportation grid.

Conceptual designs of mobility hubs were prepared, and up to eight potential locations identified along the trolley route as well as in Groton. Mobility hub amenities would include bike share, pedestrian pathway connections, a shuttle service stop and waiting area, an information kiosk and interactive, internet-based information displaying travel lodging, tourist and local events.



Next Steps: Community Support Is Key

- Attend the final public meeting for the study on March 2nd to provide input
- Send us your comments via the study website by March 18, 2011
- Visit the website frequently to view final study documents as they are posted

Get Involved!

The resulting concepts will be presented to the public for their review and comment on Wednesday, March 2, 2011 at 7:00 PM at the Hoxie Fire House. Please attend this important presentation and open house to continue to contribute to the success of this vision to improve Mystic's Mobility!

Attend Public Meeting #3:

Date:	Wednesday, March 2, 2011
Time:	7:00 PM
Place:	Hoxie Fire House 34 Broadway Avenue Mystic, CT 06355

Visit www.mysticmobility.org to share your views!

Study Contacts:

Stephen A. Gazillo, AICP
Consultant Project Manager
Director -Trans. Planning, URS Corporation
500 Enterprise Drive, Suite 3B
Rocky Hill, CT 06067
(860) 529-8882, x 312 • Fax: (860) 520-3991
stephen_gazillo@urscorp.com