



Mystic Mobility Study

February 2010



Mystic Mobility Study is Underway

A family arriving at Mystic's Train Depot will discover they are still two miles distant from a hotel and tourist destinations located up Route 27 in Mystic's "Golden Triangle". Their sometimes lengthy search for public transportation to get to their destination is not the best first impression to Connecticut's premier tourist location.

The family choosing to arrive by automobile but wishing to park and get around Mystic by other means faces a similar dilemma. The commercial area around Exit 90 from I-95 is emblematic of 20th century automobile-oriented development. Wide speed-inducing streets, large parking lots, and drive-thru restaurants are not at all representative of the qualities of the region that people flock to see and experi-

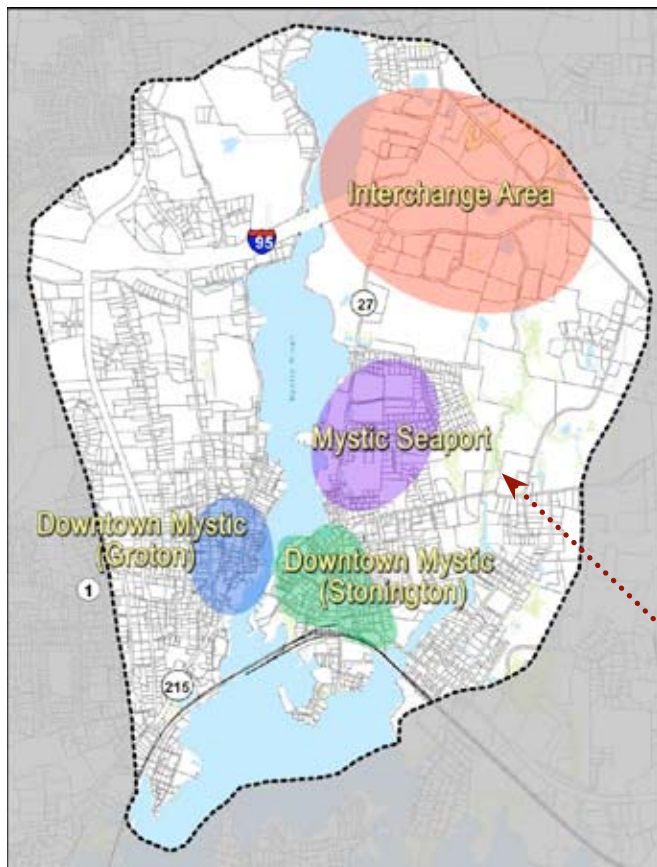
"As fuel prices go up and more visitors arrive in Mystic by train or a bus rather than a car, a local transit system that links destinations to each other will be needed. The Mystic Mobility Study will lay the groundwork for better connections."

Bill Haase, Planning Director for the Town of Stonington and Project Manager for the Mystic Mobility Study

ence. Furthermore, attractions in this area are not visibly or easily connected to the historic downtown or Mystic Seaport.

Can the focus areas of this study be improved as a walkable district with transit and water transport that will not only provide a welcome center but also a destination centered on tourism and mobility?

The Town of Stonington, in cooperation with the Town of Groton, Mystic Seaport Museum, and other federal, state, regional, and local stakeholders, is conducting the Mystic Mobility Study to look at how to improve the movement of people and vehicles to enhance the experience of those who live, work, or visit in the Mystic area. This study will be carried out over an approximate 15 month period concluding in early 2011.



The study area extends from Exit 90 on Interstate 95 to include Mystic's "Golden Triangle" (defined by Route 27, Coogan Boulevard and Jerry Browne Road and zoned to permit dense commercial development), south along Route 27 to downtown Mystic, on both the Groton and Stonington sides of the Mystic River.

Mystic Mobility Study • Fact Sheet

What we are looking at:

Recommended transportation improvement options identified in an earlier broad brush transportation study completed for the Towns of Stonington and Groton in 2008 (Mystic Multi-modal Transportation Study) are the focus of this study, including:

- Creation of a Transportation Center.
- Reinstitution of a Mystic Trolley Bus Service.
- Expansion of Mystic Seaport Water Shuttle Service.
- Improve directional wayfinding signage throughout Mystic.
- Enhance pedestrian and non-vehicular transit linkages (bike lanes, sidewalk improvements, etc.).
- Make intersection improvements to enhance traffic flow and promote pedestrian safety.
- Improve sidewalk maintenance and accessibility.

Prior to implementation, it is important to thoroughly evaluate each of these recommendations and determine what can reasonably be accomplished given factors such as financial feasibility, cost effectiveness and operational constraints.

Get Involved!

Current and potential users of the transportation system in the Mystic area are critical participants in this study. There are a variety of opportunities for the public to participate and provide input to the study team:

- Three public information meetings will be held at key study milestones throughout the study.
- A study website allows the public to track the progress of the study, receive notice of public meetings and submit comments directly to the study team.

Please visit www.mysticmobility.org to share your views!



Mystic Seaport Museum



Olde Mistick Village shopping destination in "Golden Triangle" near I-95



Entrance to Mystic Aquarium & Institute for Exploration



Mystic Village Drawbridge over the Mystic River joins Groton with Stonington

Study Contacts:

William R. Haase, AICP

Study Project Manager

Planning Director

Town of Stonington

152 Elm Street

Stonington, CT 06378

(860) 535-5095

whaase@stonington-ct.gov

Stephen A. Gazillo, AICP

Consultant Project Manager

Director - Transportation Planning

URS Corporation

500 Enterprise Drive, Suite 3B

Rocky Hill, CT 06067

(860) 529-8882, x 312

Fax: (860) 520-3991

stephen_gazillo@urscorp.com